



TOWN OF **GREENWICH**

Office of First Selectman (203) 622-7710 Fax (203) 622-3793

Town Hall- 101 Field Point Road - Greenwich, CT 06830

E-Mail: ptesei@greenwichct.org

www.twitter.com/GreenwichFirst

Peter J. Tesei
First Selectman

P R E S S R E L E A S E

FOR IMMEDIATE RELEASE

**August 25, 2011
3:45 p.m.**

The Town of Greenwich participated in a statewide conference call at 12 noon today for all municipal CEOs, Service Chiefs, Public Works Directors and Emergency Management Directors. The purpose of the call is to update the forecast for Hurricane Irene and to review critical hurricane preparedness activities.

This is likely to be a major storm event. The Western Greenwich Civic Center has been identified as a sheltering station effective 10:00 a.m. Saturday, August 27.

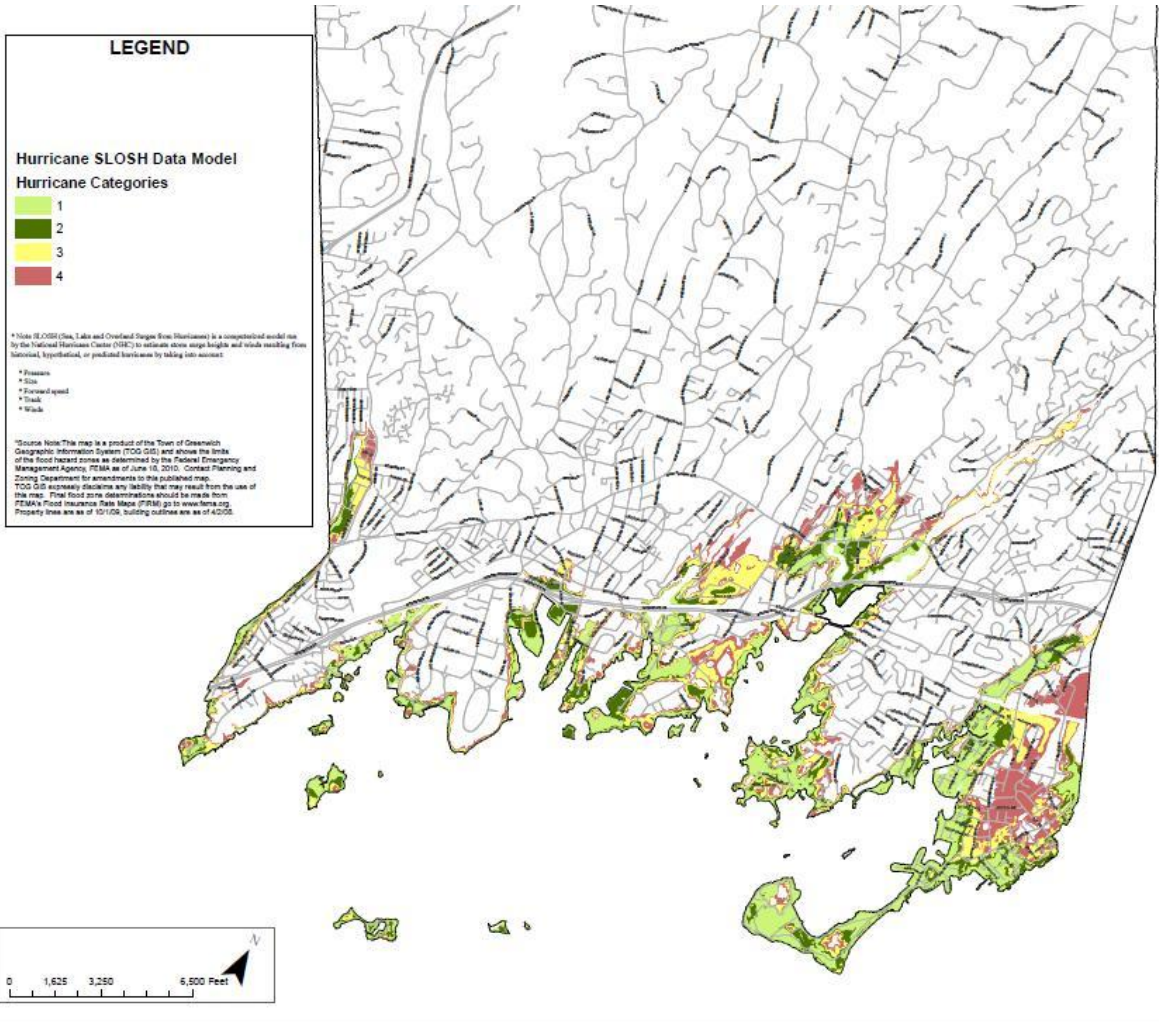
The latest forecast predicts that Irene could make landfall in Connecticut in the Stamford area as a Category 1 hurricane around 5:00 p.m. on Sunday the 28th of August. There may be sustained winds of 90 miles per hour with gusts up to 110 miles per hour. In addition to the wind, rainfall is predicted to be 10 to 15 inches during this storm event.

If you have previously experienced flooding in you home or on your property, you should begin to take precautions to protect your belongings. At the conclusion of this press release is a copy of the Federal Emergency Management Agency (FEMA) Sea, Lake and Overland Surge from Hurricane (SLOSH) map. If you reside in any area that may be green or yellow, you too should begin moving all belongings from your basement or garage to higher ground. Evacuation of shoreline and other low-lying areas may be necessary.

Please routinely check you local news outlets for up to date information. The Town of Greenwich will issue further information as it becomes available.

Residents are encouraged to visit websites including the Town's website (www.greenwichct.org) to view the booklet on hurricane preparedness, The American Red Cross (www.redcross.org), and the federal government (www.ready.gov) for pointers on personal readiness and listen to local news radio and TV stations (WGCH 1490 AM, WLNK 1350 AM and Cablevision Channel 12) for up to date information. During an emergency the Town may opt to use the Reverse 911 system to send a recorded message to each resident that has a published number. All residents with non-published numbers must sign on through the Town's website. Cell phone numbers can also be programmed for contact.

For additional information please contact Caroline Baisley, Director of Health at 622 7836 (cbaisley@greenwichct.org) or Dan Warzoha, Emergency Management Director at 622 2222 (emoc@greenwichct.org).



HURRICANE (SLOSH Model) Sea, Lake, and Overland Surges from Hurricanes